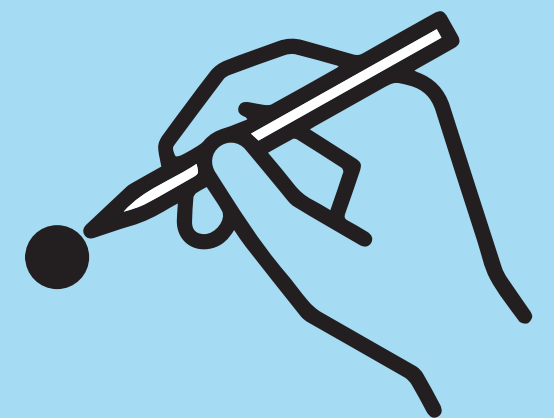




# Richmond Hill Centre Secondary Plan Study

## Kick-Off and Visioning



June 26th 2019

Welcome to the Richmond Hill Centre Secondary Plan Study Kick-Off and Visioning. This is the start of a study that will be used to inform the development of a Secondary Plan for Richmond Hill Centre. Today we are here to introduce the study, describe the growth and change expected for the area and hear your thoughts and ideas for what you want the Centre to become.

### OPEN HOUSE AGENDA

- 7:00pm WELCOME AND SIGN IN
- 7:20pm INTRODUCTORY PRESENTATION
- 7:50pm ROUND TABLE DISCUSSION: A VISION FOR RICHMOND HILL CENTRE
- 8:40pm REPORT BACK AND NEXT STEPS

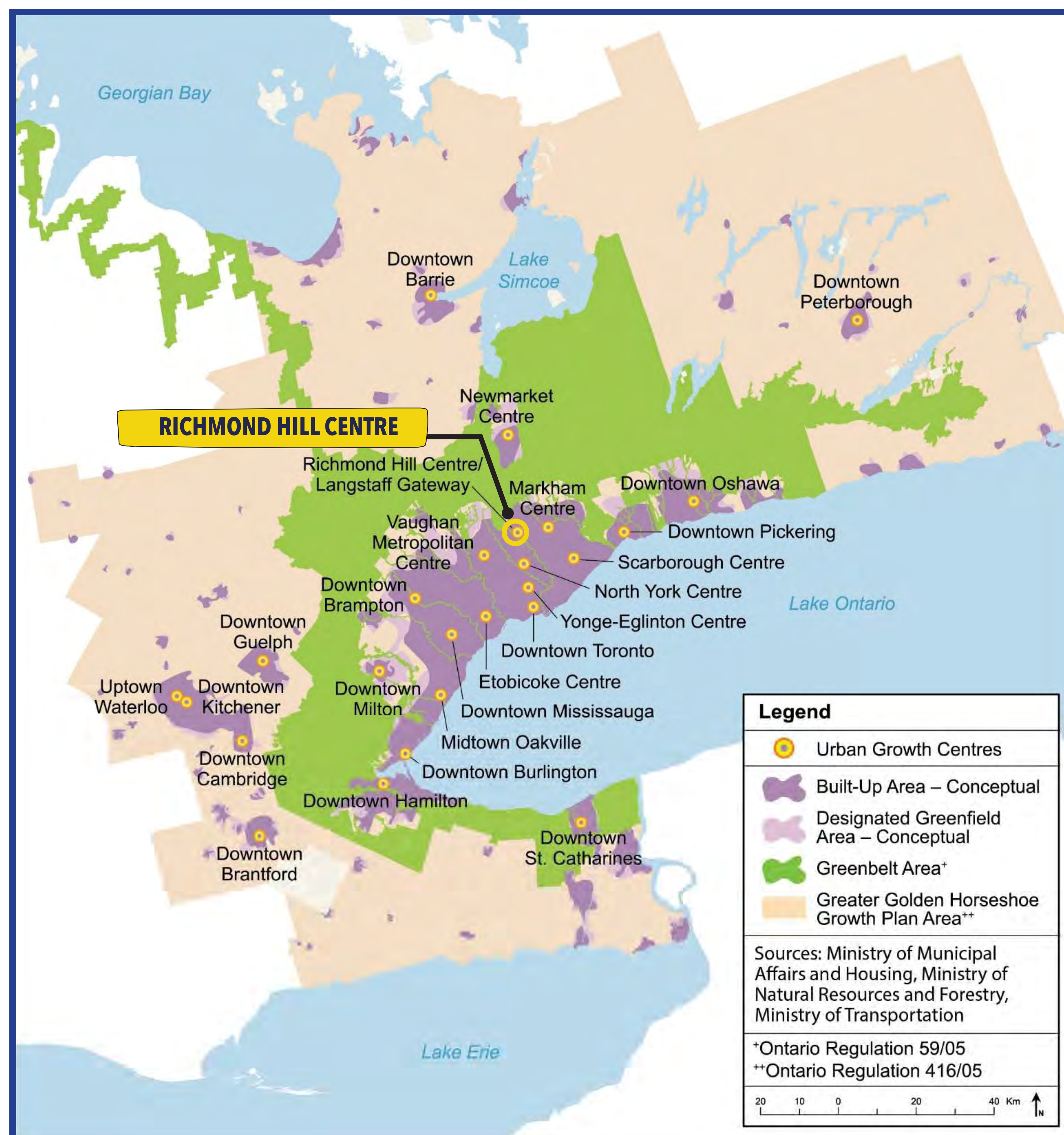


## DID YOU KNOW...

# THERE IS A LOT OF GROWTH AND INVESTMENT PLANNED FOR RICHMOND HILL CENTRE!

The Richmond Hill Centre is a Provincially designated Urban Growth Centre and has been planned for population growth and major transit investment.

Ten years ago, the City undertook a study for the Centre. Since then, real progress has been made on the Yonge Subway Extension. To better prepare for growth and change, the City is now undertaking this Secondary Plan Study to shape development in the Centre and make it a thriving part of Richmond Hill and the region.

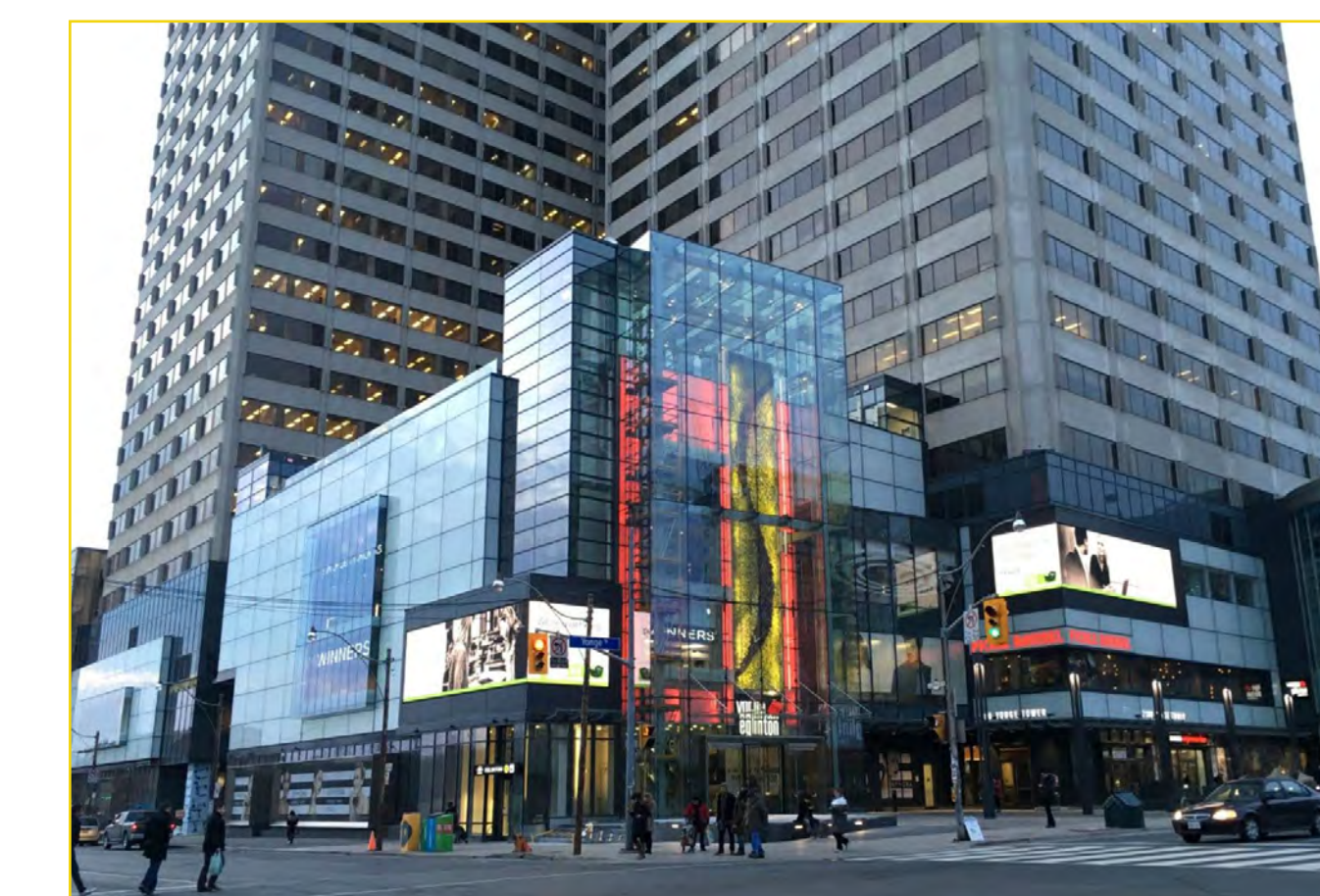


Urban Growth Centres, Places to Grow

**Urban Growth Centres are intended to be transit-connected, complete communities.**



**PLACES TO LIVE**

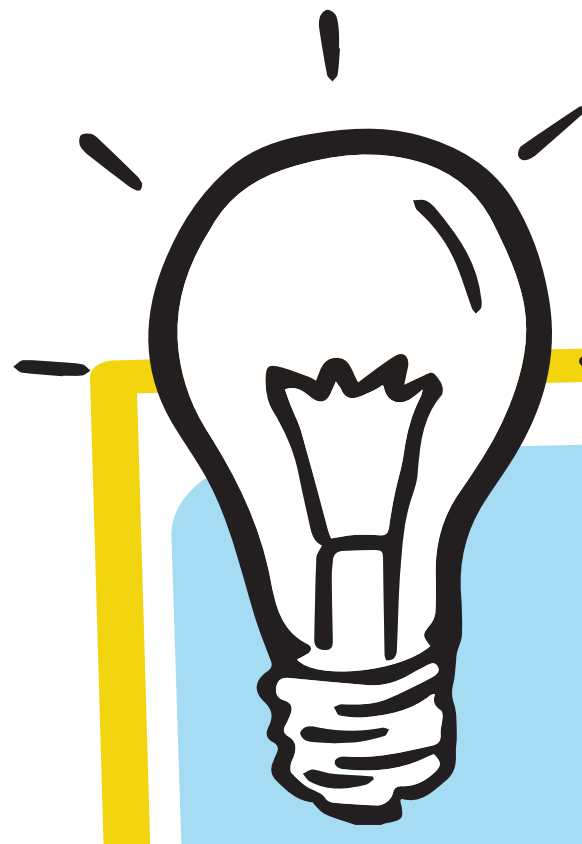


**PLACES TO WORK**



**ENCOURAGE WALKING, BIKING AND TRANSIT USE**

- **The Province requires Richmond Hill Centre to achieve a minimum of 200 people and jobs per hectare by the year 2041.**
- **The City's first study of the area assumed 450 people and jobs per hectare.**
- **York Region's Planning for Intensification Background Report assumes 500 people and jobs per hectare.**
- **The Centre has the transit network and land base to accommodate growth.**



**DID YOU KNOW...**

# THE CENTRE IS LARGE WITH ROOM TO GROW

**The Centre is capable of accommodating a broad mix of uses.** The examples below illustrate the scale of the study area in relationship to other larger centres. The examples at right illustrate centres that have densities similar to what is expected in Richmond Hill Centre.

## HOW LARGE IS THE STUDY AREA:

### RICHMOND HILL CENTRE



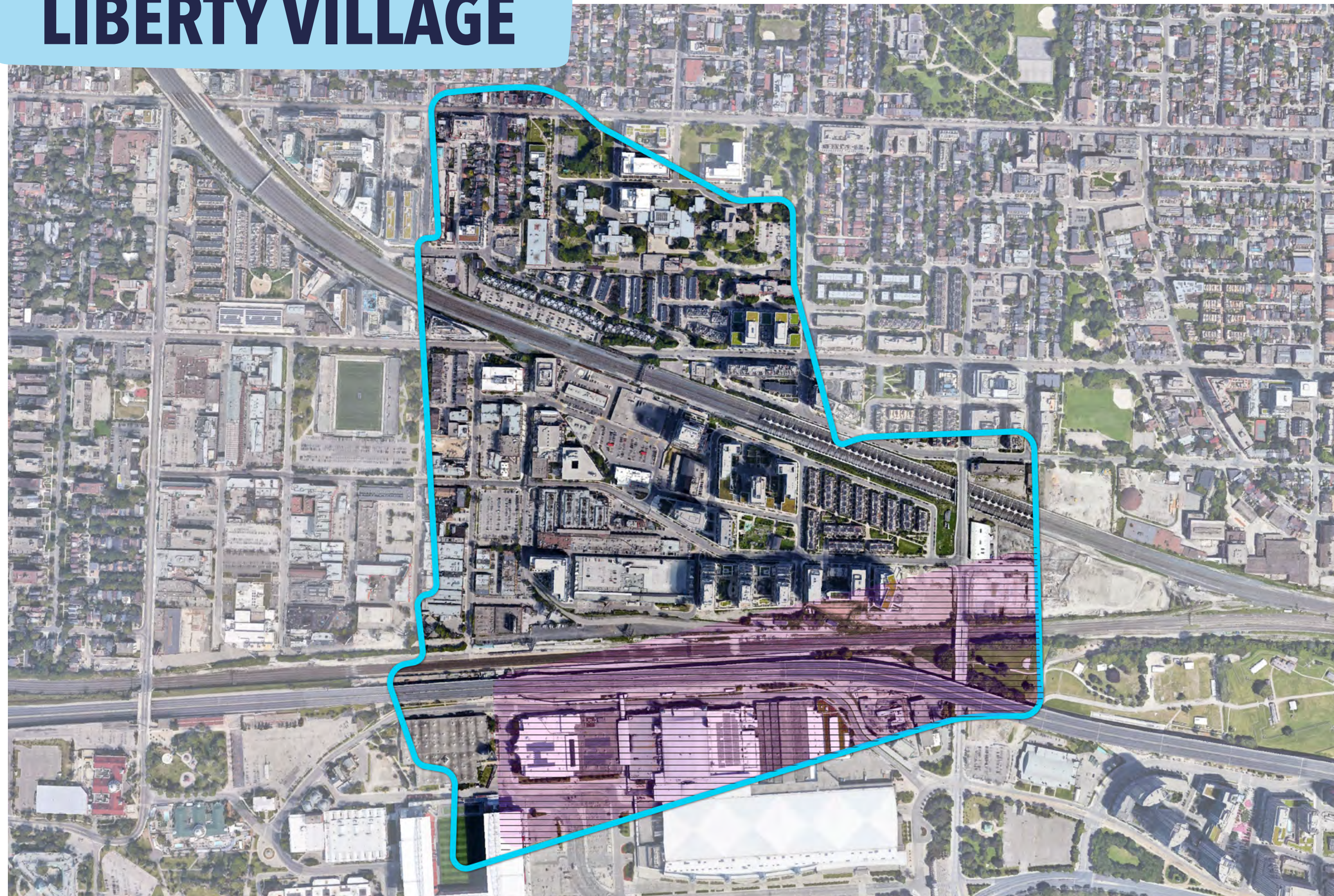
The study area.

### SOUTH CORE



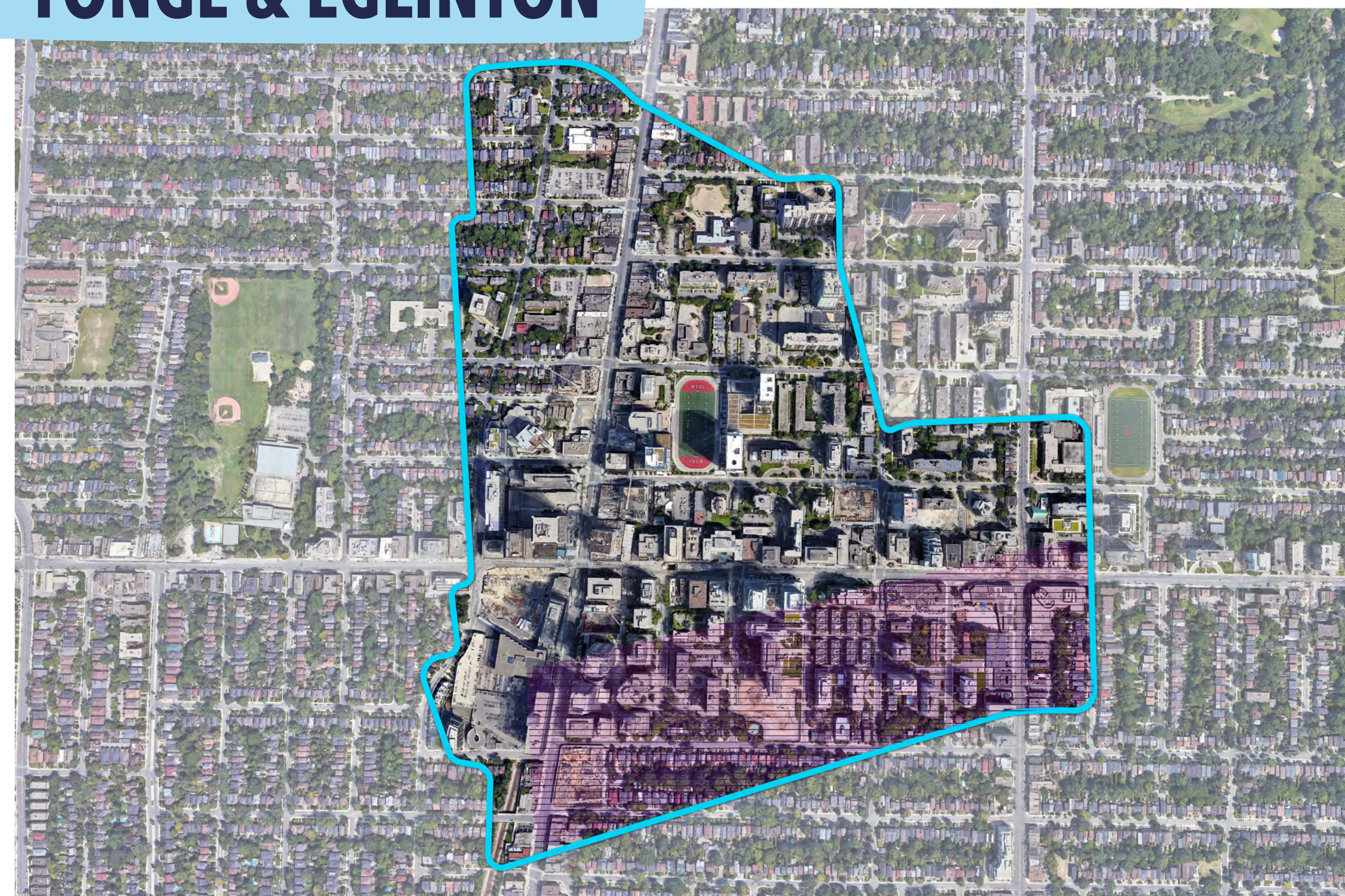
A high-rise residential and office core integrated into a regional transit hub through a mix of new streets and pedestrian connections.

### LIBERTY VILLAGE



A high density urban village with a mix of housing types integrated alongside a cluster of creative and high-tech industries.

### YONGE & EGLINTON



An urban node with a mix of mid to high rise retail and office development structured around a grid of streets and integrated alongside stable neighbourhoods.

## WHAT DOES THIS DENSITY LOOK LIKE:

### PORT CREDIT



~200 People + Jobs/ Hectare

### NORTH YORK CENTRE



~480 People + Jobs/ Hectare

### YONGE & EGLINTON



~600 People + Jobs/ Hectare



**DID YOU KNOW...  
RICHMOND HILL CENTRE IS PLANNED TO BE  
ONE OF THE MOST CONNECTED TRANSIT HUBS  
IN THE GTA!**

**TRANSIT PLANNED FOR RICHMOND HILL CENTRE**



**YONGE SUBWAY EXTENSION**

Richmond Hill Centre is the planned terminus of a 7.4km extension of the Yonge Line. The Yonge Subway Extension project is currently in the Preliminary Planning, Design and Engineering phase.



**BUS STATION**

The Centre will be home to an important bus terminal for Viva, YRT and GO buses, providing connectivity to locations across the region.



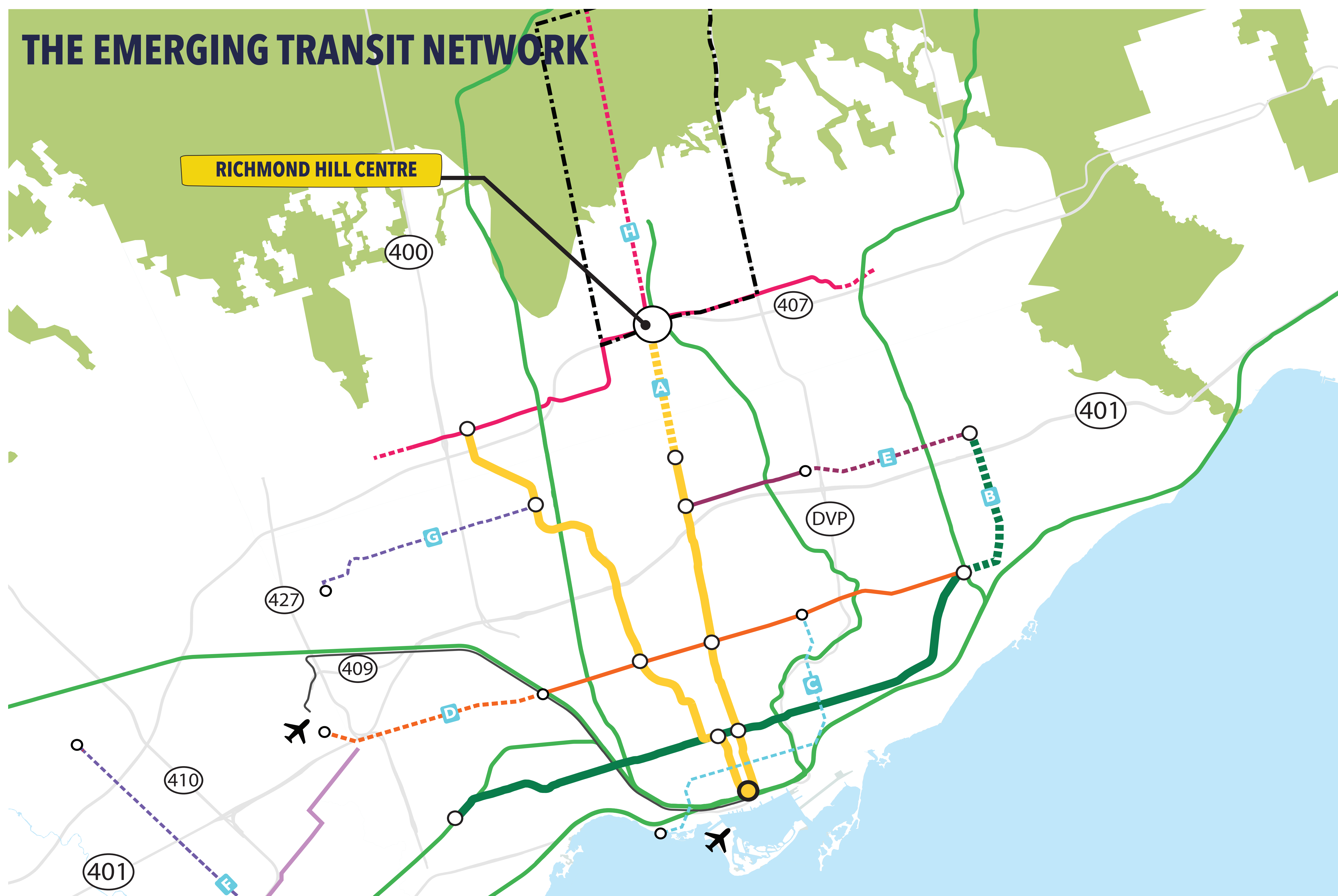
**LANGSTAFF GO STATION**

The existing Langstaff GO station currently serves the Centre and is a critical, high-speed link to points south, including Union Station.



**407 TRANSITWAY**

The 407 Transitway is a long term inter-regional transit route planned to run along the 407 Highway connecting from Burlington to Durham Region.



**LEGEND**

- Line 1: Yonge-University Line
- Line 2: Bloor-Danforth Line
- Line 4: Sheppard Line
- Line 5: Eglinton Line
- Mississauga Transitway
- VIVA Rapidway
- UP Express
- Go Lines
- A Yonge North Subway Extension to Richmon Hill
- B Three-Stop Scarborough Subway Extension
- C Ontario Line
- D Eglinton West Extension to Pearson Airport
- E Sheppard East Extension
- F Hurontario LRT
- G Finch West LRT
- H VIVA Rapidway
- Richmond Hill



# DID YOU KNOW... THE CITY STUDIED THIS AREA IN 2010

A study was completed in 2010 to provide direction for the planning of the area. It included a vision for a new high-density community structured around a fine grained network of streets, blocks and open spaces with new development integrated atop the transit station. The study informed the City's current Official Plan policies that relate to the Centre.

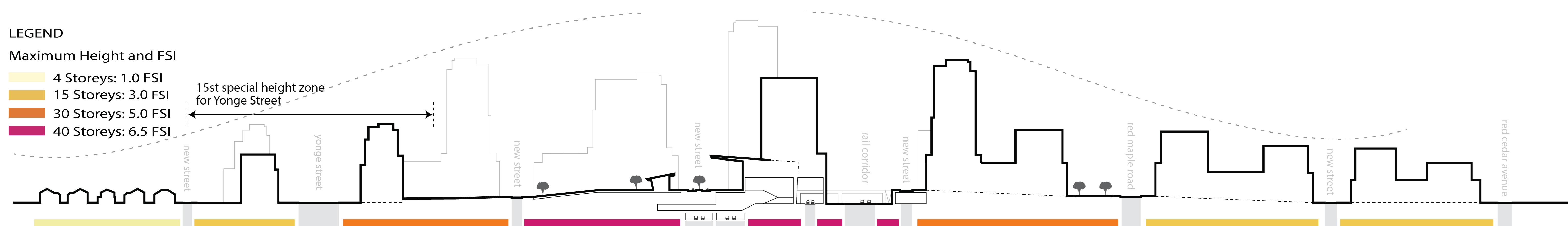


**2010 VISION**

**LEGEND**

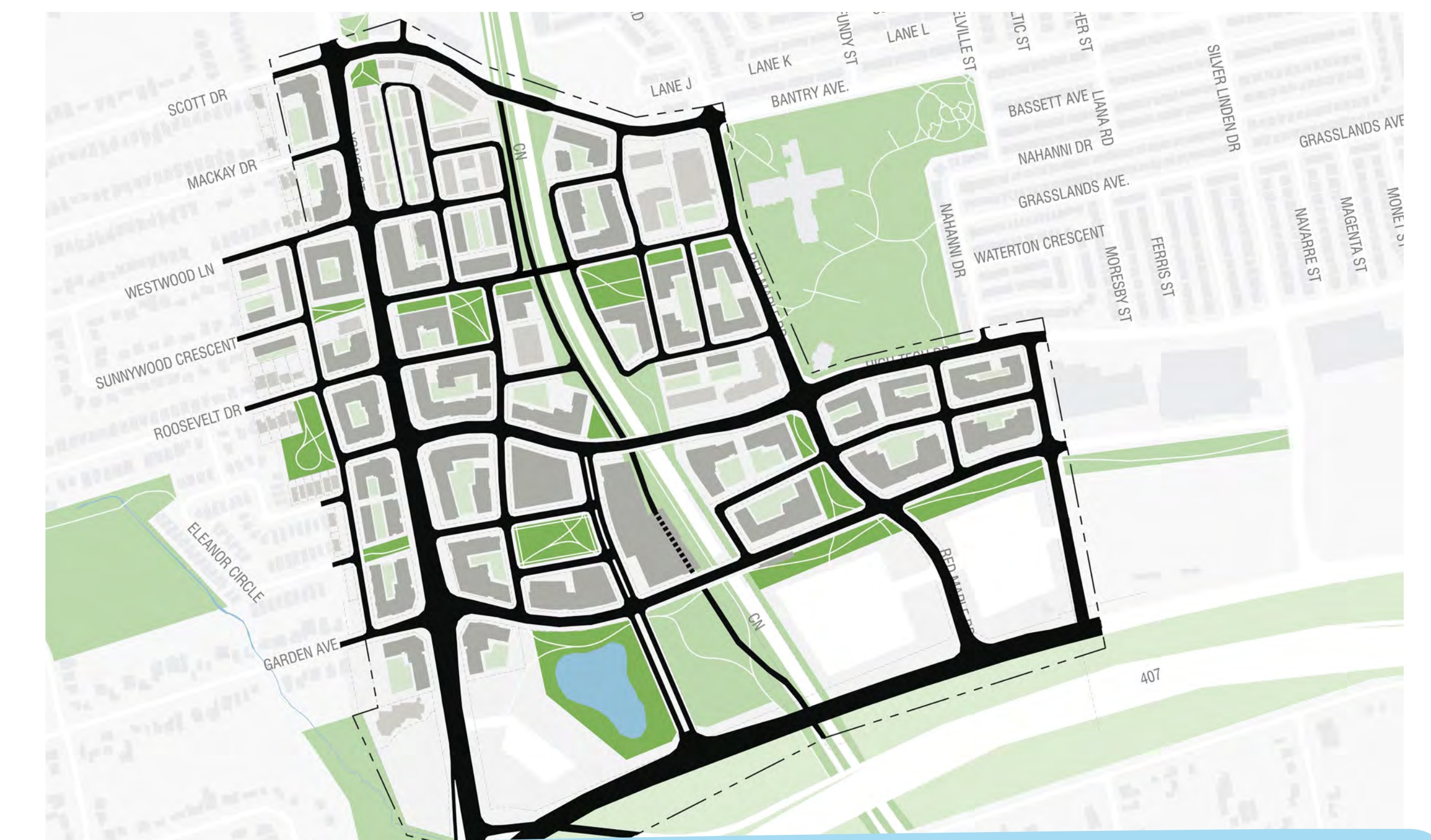
**Maximum Height and FSI**

- 4 Storeys: 1.0 FSI
- 15 Storeys: 3.0 FSI
- 30 Storeys: 5.0 FSI
- 40 Storeys: 6.5 FSI



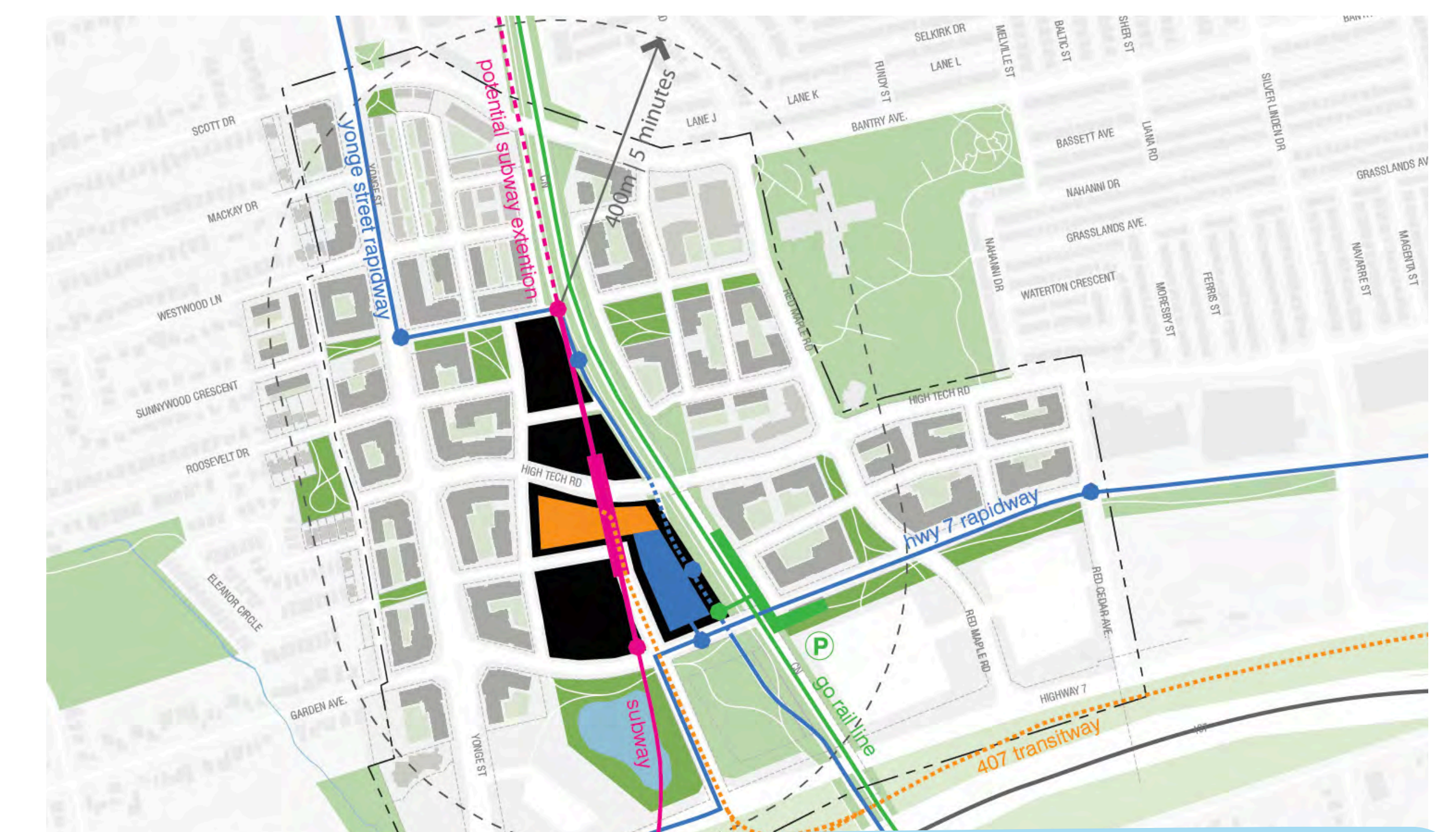
The Study directed taller buildings atop and around the station with heights decreasing towards existing neighbourhoods

**PARTS OF THE PLAN**



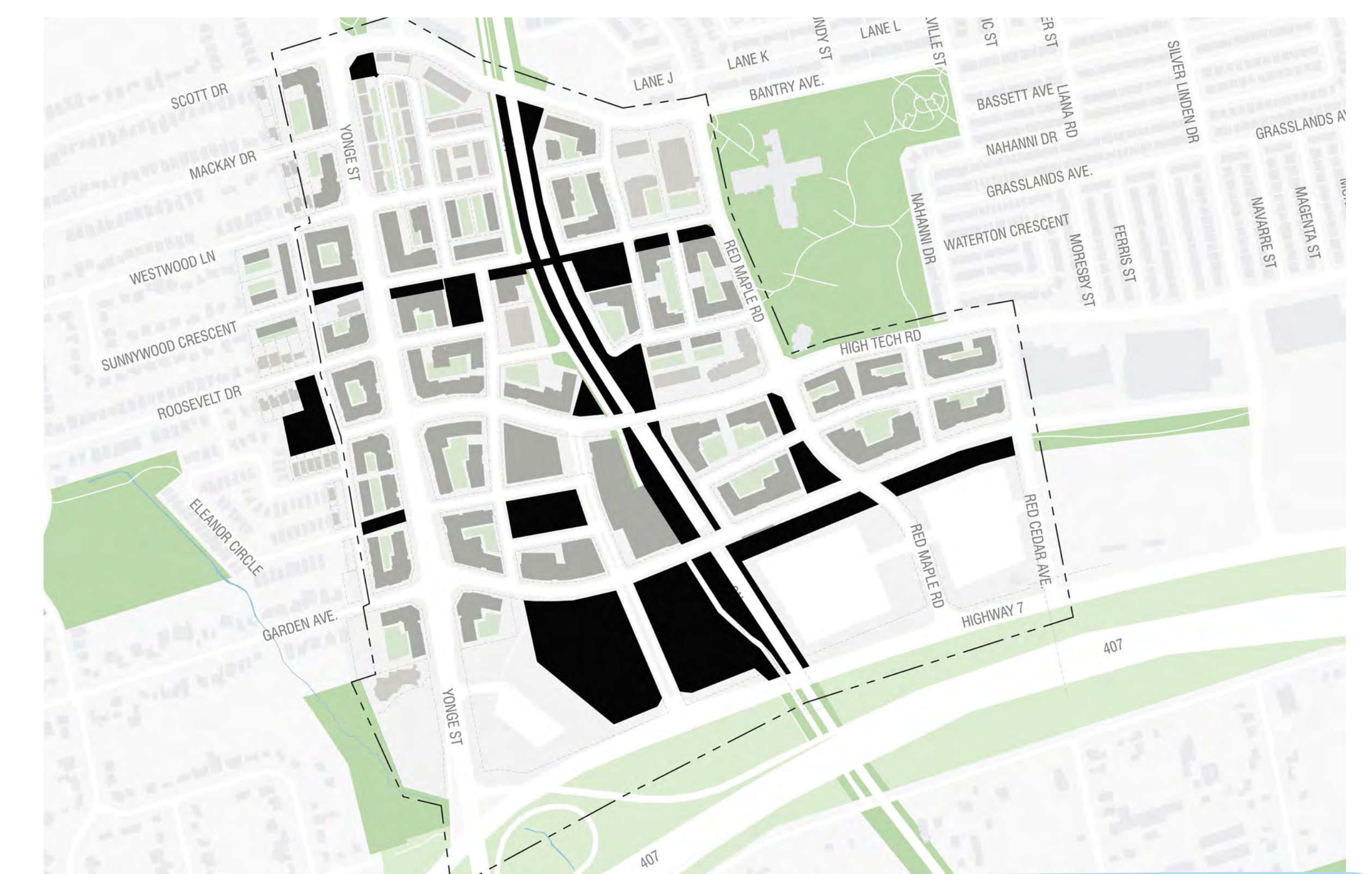
**PROPOSED STREET NETWORK**

The study proposed to structure development around a finer grained street and block network designed to make it easier to walk or bike.



**PROPOSED TRANSIT HUB**

New transit would be organized to create a hub at the heart of the Centre, integrated into the lower levels of new development.



**PROPOSED PARKS AND OPEN SPACE NETWORK**

A network of open spaces was identified as well as a series of linear parks and pedestrian and cycling corridors.

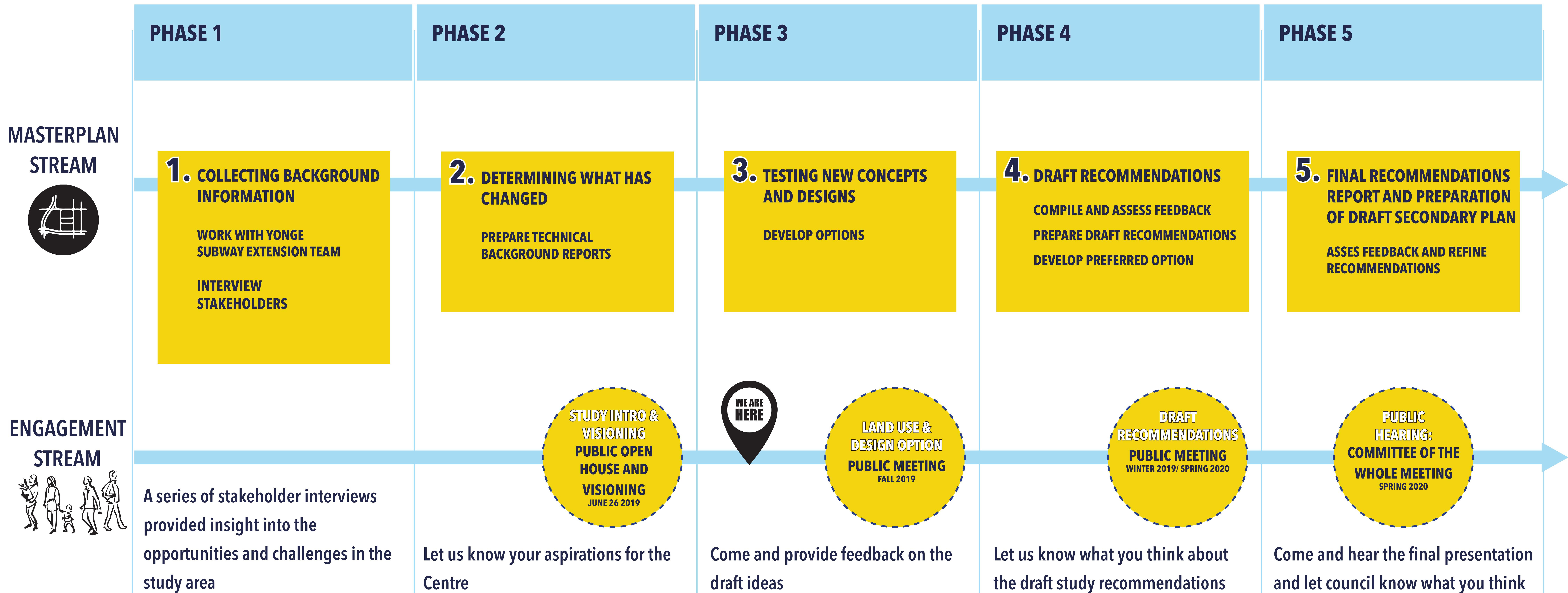


# THIS IS WHAT WE ARE DOING... HOW CAN YOU GET INVOLVED?

**The Richmond Hill Centre Secondary Plan Study is going to be used to inform the development of a Secondary Plan for Richmond Hill Centre. It will help to:**

- Define the Centre's role in the city, region, and the Greater Toronto Area;
- Create a vision and development principles to guide what kind of place the Centre will be;
- Establish the City's expectations for the development of the Centre over time; and
- Assist in guiding the design and integration of new transit investments.

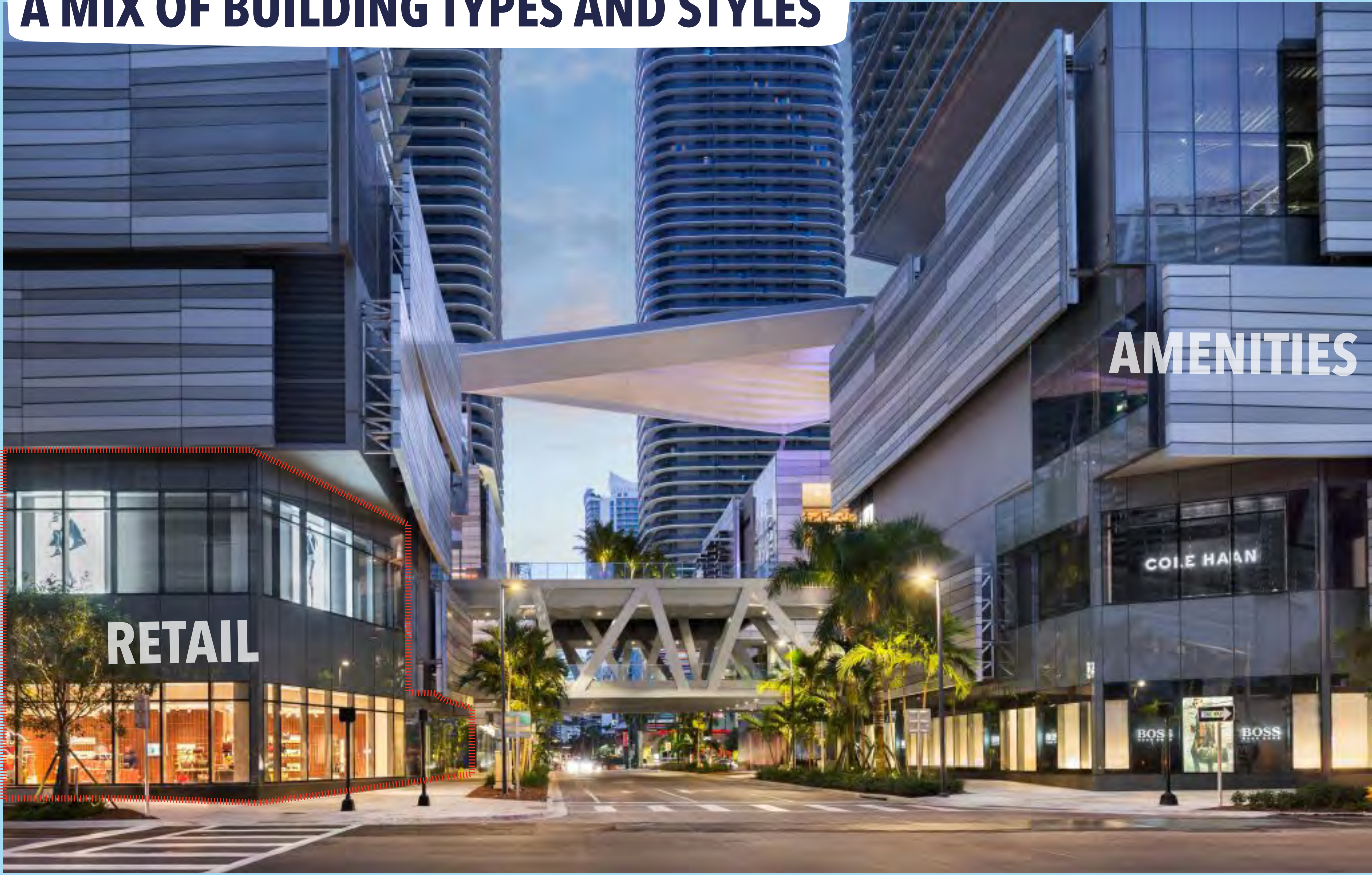
**The study will be completed over the course of 5 phases with opportunities for input throughout.**





**REDEFINING A VISION**  
**WHAT DO YOU THINK?**  
**WHAT IS THE RIGHT MIX OF BUILDINGS AND USES?**

**Brickell City Center, Miami, USA**  
**A MIX OF BUILDING TYPES AND STYLES**



**South Waterfront, Portland, USA**  
**HIGH RISE BUILDINGS ORGANIZED TO MINIMIZE SHADOWS AND PRESERVE VIEWS**



**Marine Gateway, Vancouver, Canada**  
**A MIX OF RESIDENTIAL AND EMPLOYMENT USES INTEGRATED INTO TRANSIT**



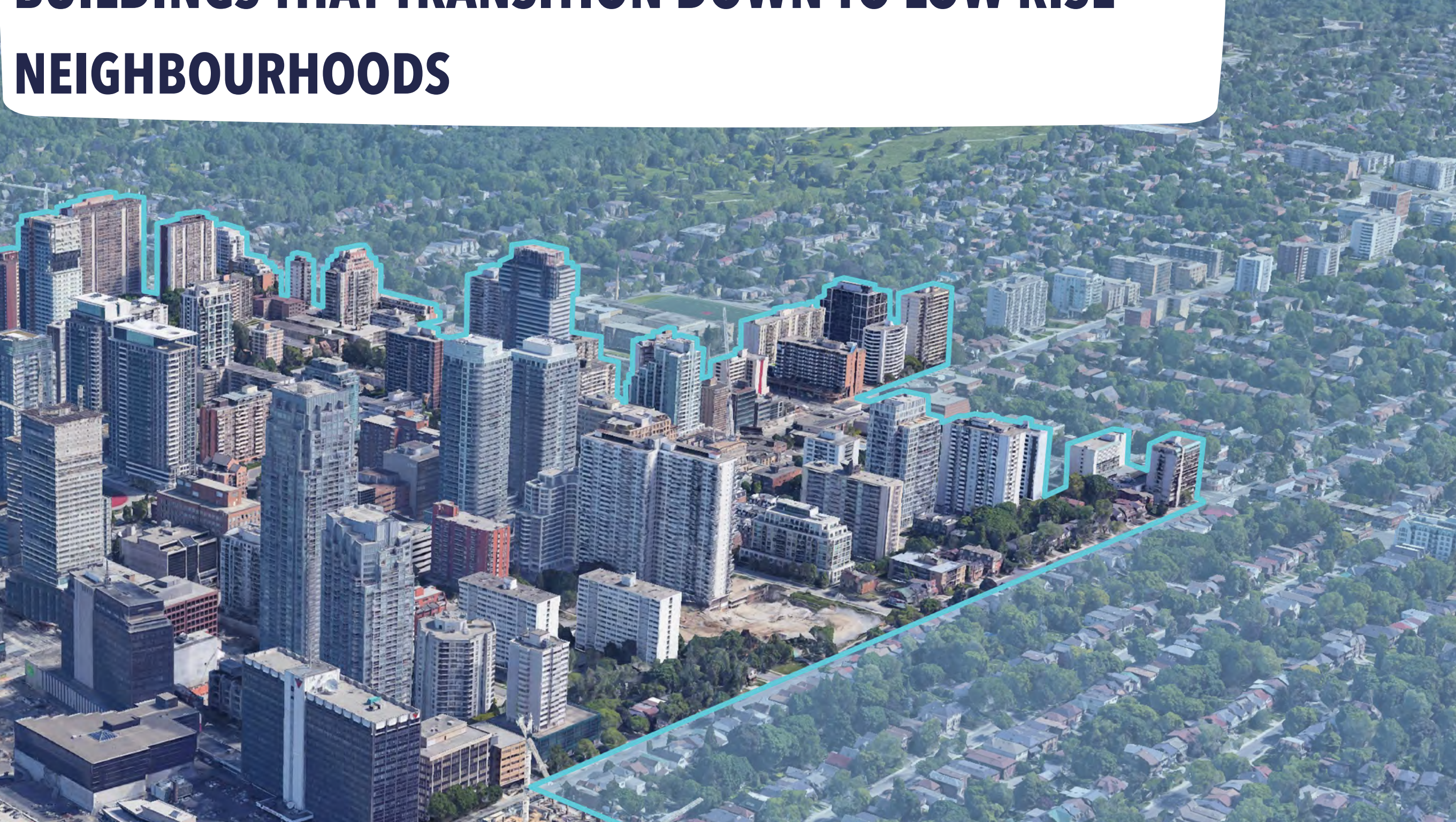
**Marine Gateway, Vancouver, Canada**  
**STREETS LINED WITH LARGE AND SMALL SHOPS**



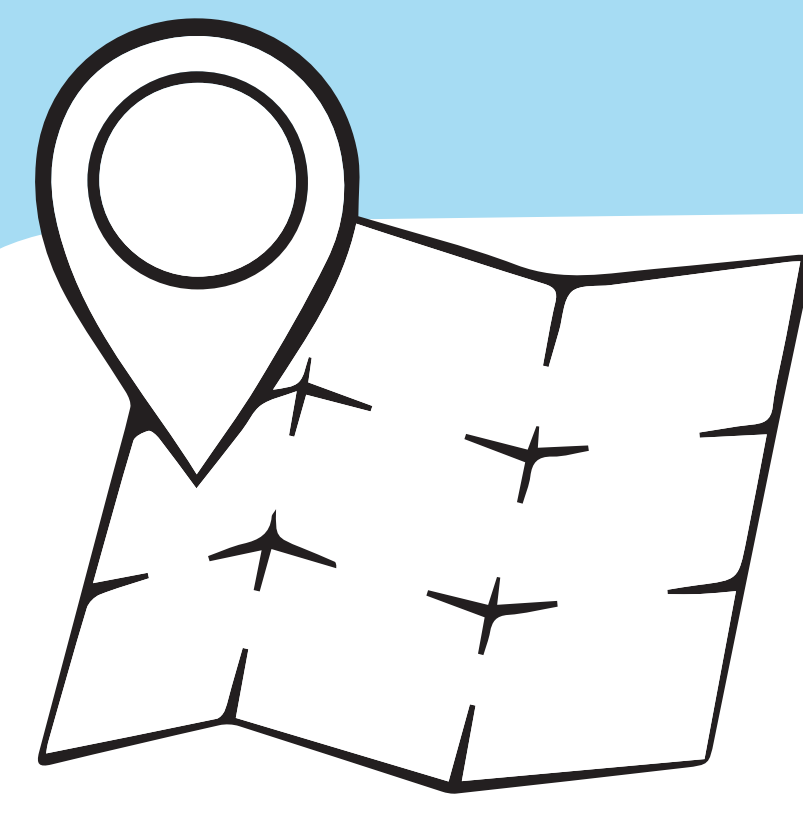
**South Lake Union, Seattle, USA**  
**A CENTRE FOR JOBS**



**Yonge and Eglinton, Toronto**  
**BUILDINGS THAT TRANSITION DOWN TO LOW RISE NEIGHBOURHOODS**



**TELL US WHAT YOU THINK...**  
 Use the **green** sticky arrows to point to and describe things you **DO** like.  
 Use the **orange** sticky arrows to point to and describe things you **DON'T** like.



# REDEFINING A VISION

## WHAT DO YOU THINK?

### HOW DO WE MOVE AROUND IN THE CENTRE?

**A NETWORK OF CYCLING LANES**



**PEDESTRIAN ORIENTED STREETS**



**TRAIL AND GREENWAY CONNECTIONS**



**BIKE SHARE**



**A NETWORK OF PEDESTRIAN CONNECTIONS**



**TRANSIT BUILT INTO NEW BUILDINGS**



**RIDE SHARING**



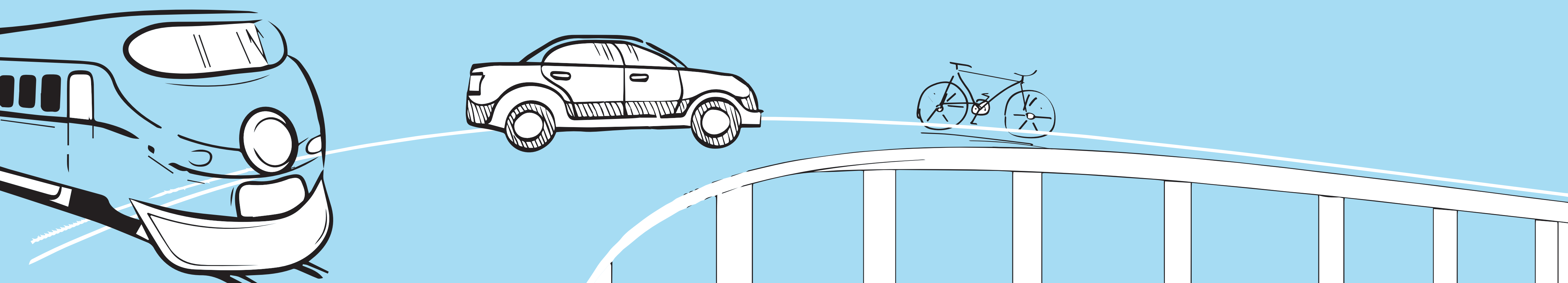
**UNDERGROUND PEDESTRIAN WALKWAYS**

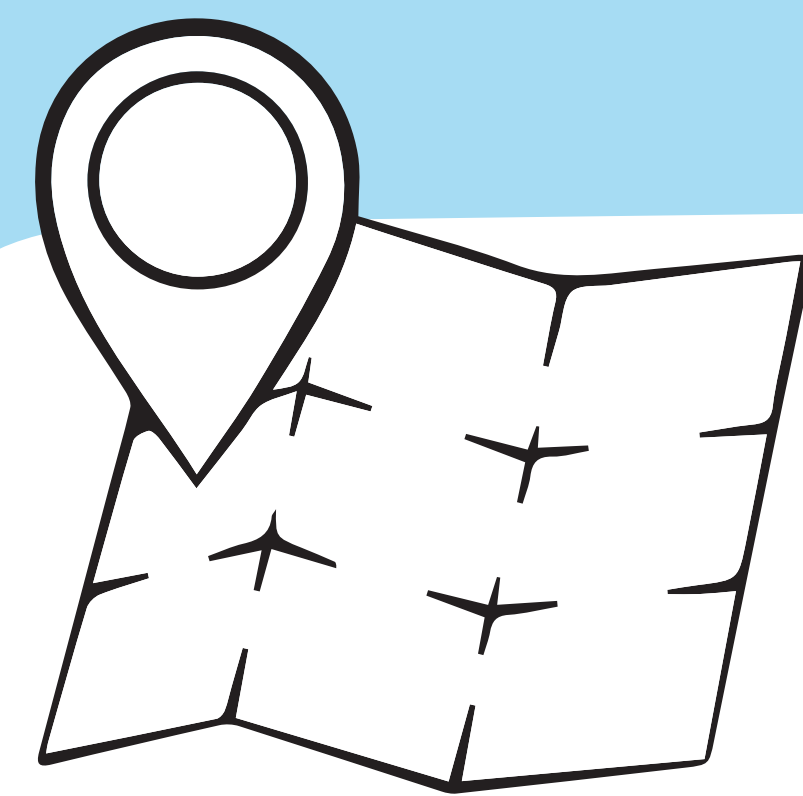


## TELL US WHAT YOU THINK...

Use the **green** sticky arrows to point to and describe things you **DO** like.

Use the **orange** sticky arrows to point to and describe things you **DON'T** like.





REDEFINING A VISION  
**WHAT DO YOU THINK?**  
 WHAT TYPE OF STREETS AND OPEN SPACES DO YOU WANT?



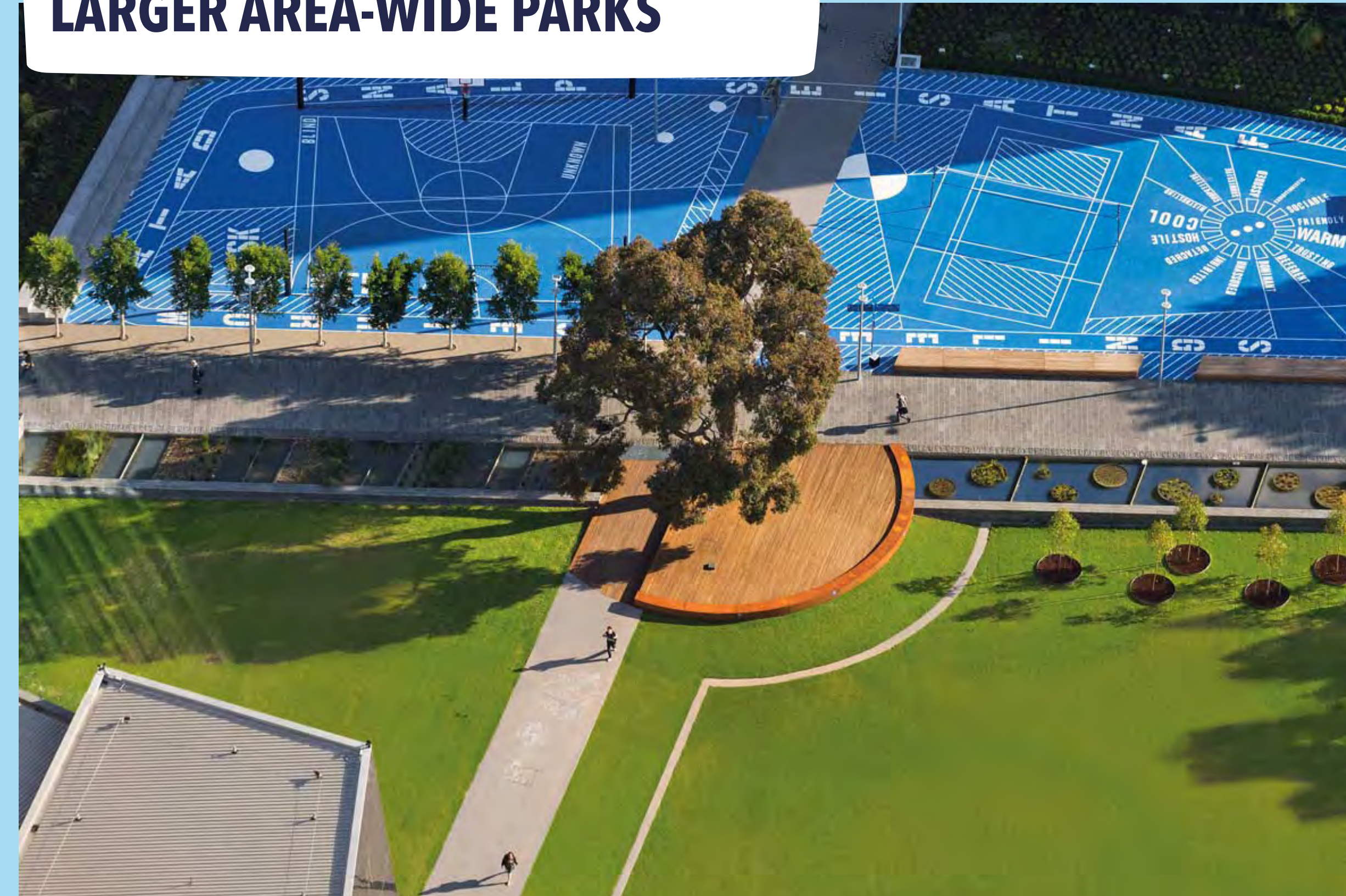
**URBAN PLAZAS AND GATHERING SPACES**



**SMALL NEIGHBOURHOOD PARKS**



**LARGER AREA-WIDE PARKS**



**TRADITIONAL PLAZAS**



**PARKS TO RUN AND PLAY IN**



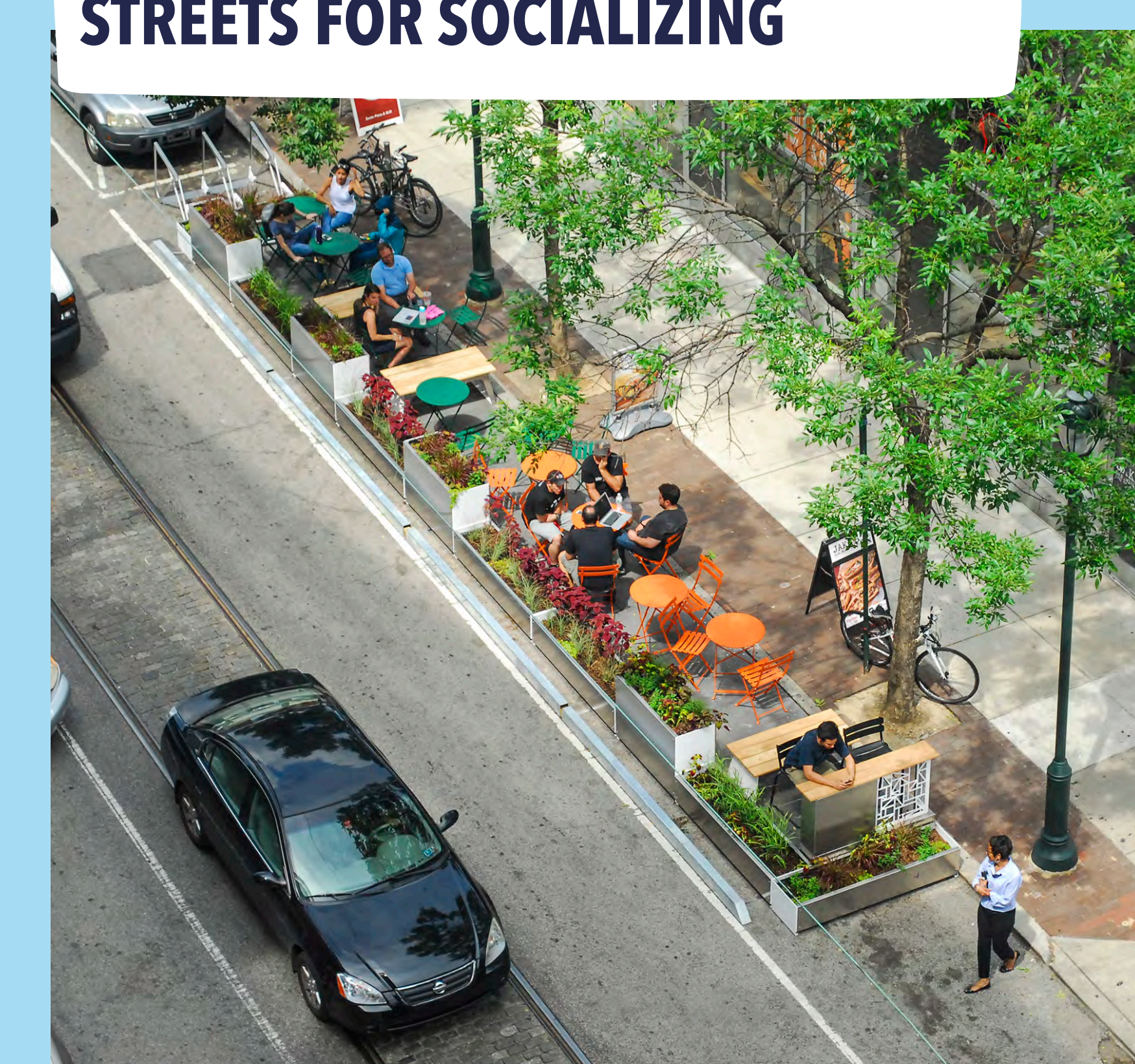
**PARKS TO SIT AND RELAX IN**



**STREETS DESIGNED TO BALANCE DIFFERENT USERS**



**STREETS FOR SOCIALIZING**



**TELL US WHAT YOU THINK...**

Use the **green** sticky arrows to point to and describe things you **DO** like.

Use the **orange** sticky arrows to point to and describe things you **DON'T** like.



# REDEFINING A VISION WHAT DO YOU THINK? HOW DO WE CREATE A SUSTAINABLE RESILIENT COMMUNITY?

## GREEN BUILDING TECHNOLOGIES



RBC WaterPark Place is certified as an LEED Core and Shell Platinum building. The building, completed in 2014, has implemented numerous sustainable features such as deep lake water cooling, a 7,500 sq ft green roof, heat reclamation, and high-efficiency condensing boilers.

## DISTRICT ENERGY



The West Village Park and District Energy Utility is located in Surrey, B.C. This is a joint initiative by the City of Surrey Parks and Surrey City Energy, which will address the need for park space in Surrey's new West Village neighbourhood. It will be the City's first permanent district energy facility.

## GREEN BUILDING TECHNOLOGIES



Sportplaza Mercator in the Netherlands utilizes green façades and roof. Vertical greening cools the building's surface and can have an impact on the inner climate in the building by preventing warming of the façade.

## LOW IMPACT DEVELOPMENT

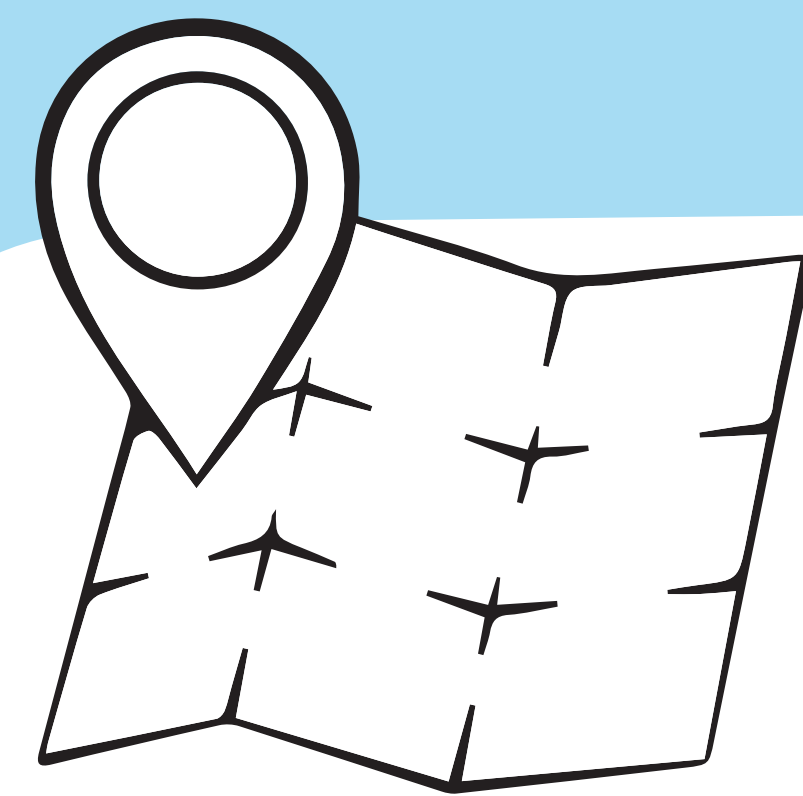


Louvers on the Karolinska Institute in Sweden are utilized for natural ventilation and temperature control. Louvers also create functional and lightweight architectural surfaces both indoors and outdoors.

## TELL US WHAT YOU THINK...

Use the **green** sticky arrows to point to and describe things you **DO** like.

Use the **orange** sticky arrows to point to and describe things you **DON'T** like.



# REDEFINING A VISION WHAT DO YOU THINK?

## WHAT COMMUNITY INFRASTRUCTURE IS REQUIRED? HOW CAN WE INTEGRATE THEM INTO THE CENTRE?

A MIX OF HOUSING TYPES AND EDUCATIONAL USES



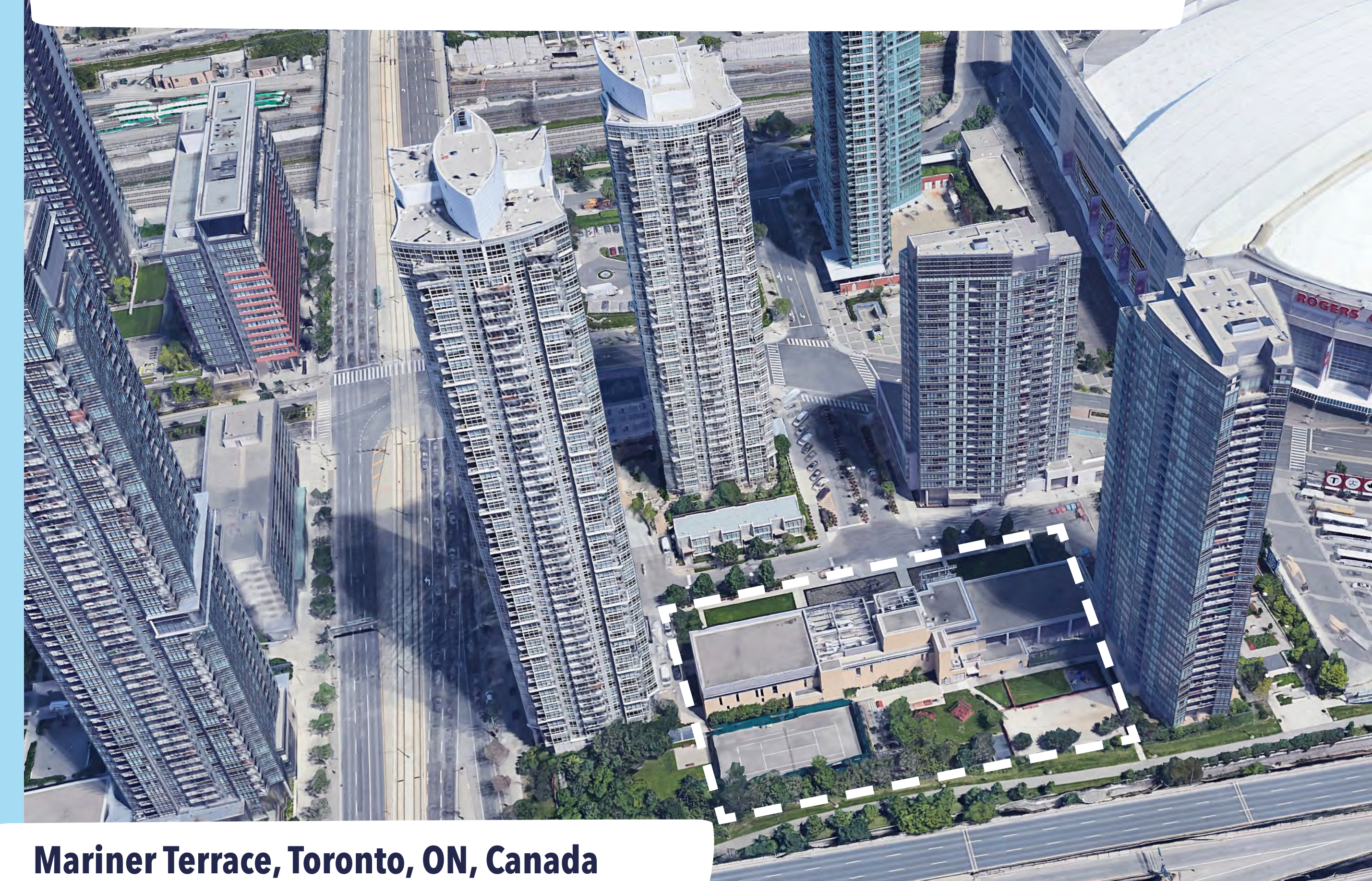
Woodward's Building, Vancouver, BC, Canada

A NEW HIGH SCHOOL INTEGRATED INTO THE BASE OF AN APARTMENT BUILDING



North York Collegiate, Ontario, Canada

A SHARED COMMUNITY CENTRE FOR NEW HOUSING



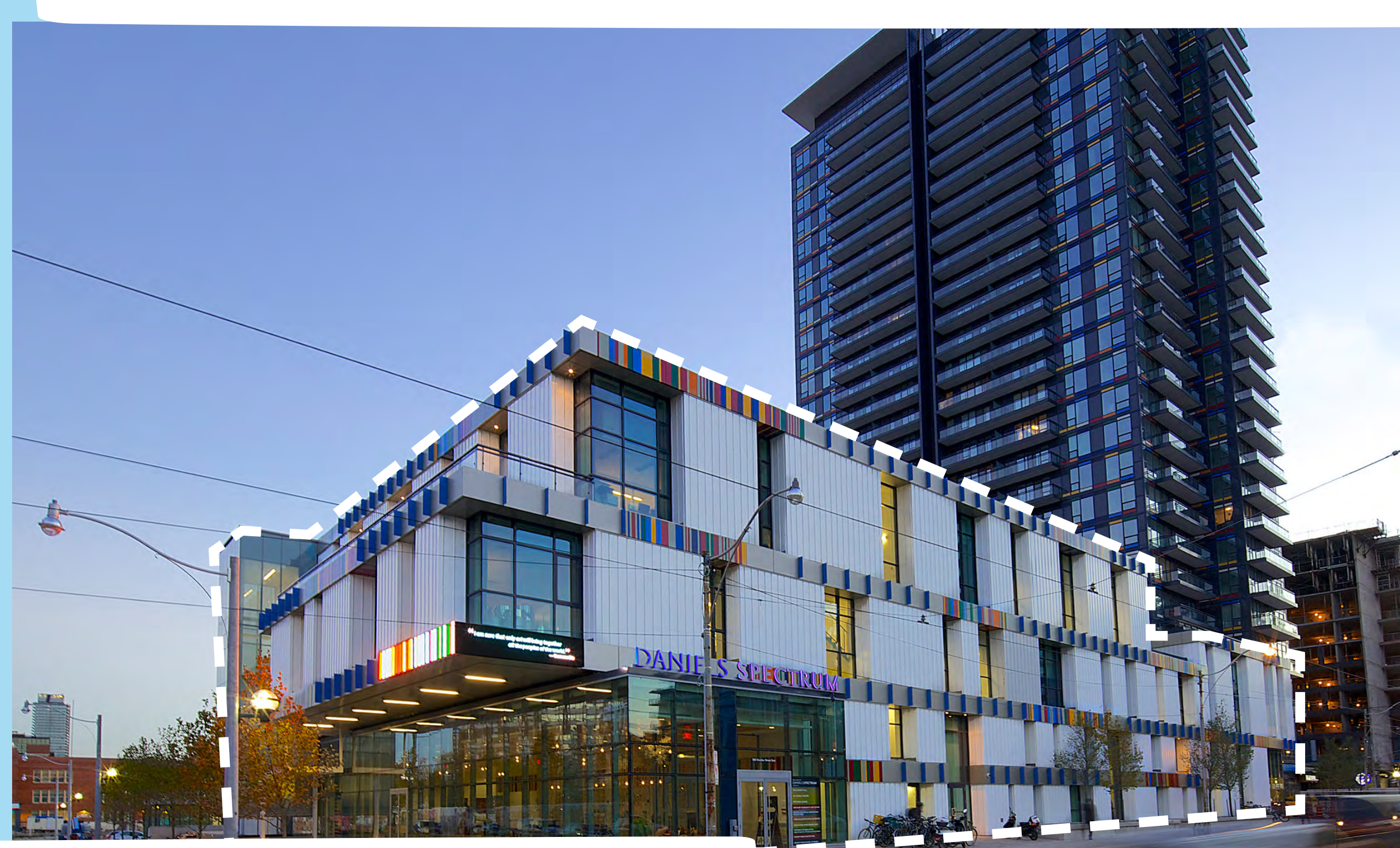
Mariner Terrace, Toronto, ON, Canada

SHARED COMMUNITY CENTRE



Kingston Road YMCA, Toronto, ON, Canada

AN ARTS AND CULTURAL HUB ATTACHED TO A NEW APARTMENT



Daniels Spectrum, Toronto, ON, Canada

## TELL US WHAT YOU THINK...

Use the **green** sticky arrows to point to and describe things you **DO** like.

Use the **orange** sticky arrows to point to and describe things you **DON'T** like.



# RICHMOND HILL CENTRE REDEFINING A VISION

It has been 10 years since the first vision for the Centre was created.  
Help us think far into the future about what the Centre can achieve.  
What words best characterize the kind of place you think the Centre  
should become?

HOW SHOULD IT LOOK AND FEEL?

WHY WOULD YOU CHOOSE TO WORK THERE?

WHAT WILL ITS PARKS AND OPEN SPACES BE LIKE?

WHAT WILL IT BE LIKE TO LIVE THERE?

WHAT WILL MAKE IT UNIQUE IN THE REGION?

## WHAT IT COULD BE...



Marine Gateway, Vancouver, B.C., Canada  
Transit Oriented Design



Seaport Square, Boston, USA  
Mixed Use Block Development



CityCenter, Washington DC, USA  
Mixed Use Development

SELECT THE WORDS THAT BEST APPLY FROM THE STACK BELOW OR USE THE MARKERS PROVIDED TO LET US KNOW WHAT YOU THINK THE RICHMOND HILL CENTRE SHOULD BE LIKE.